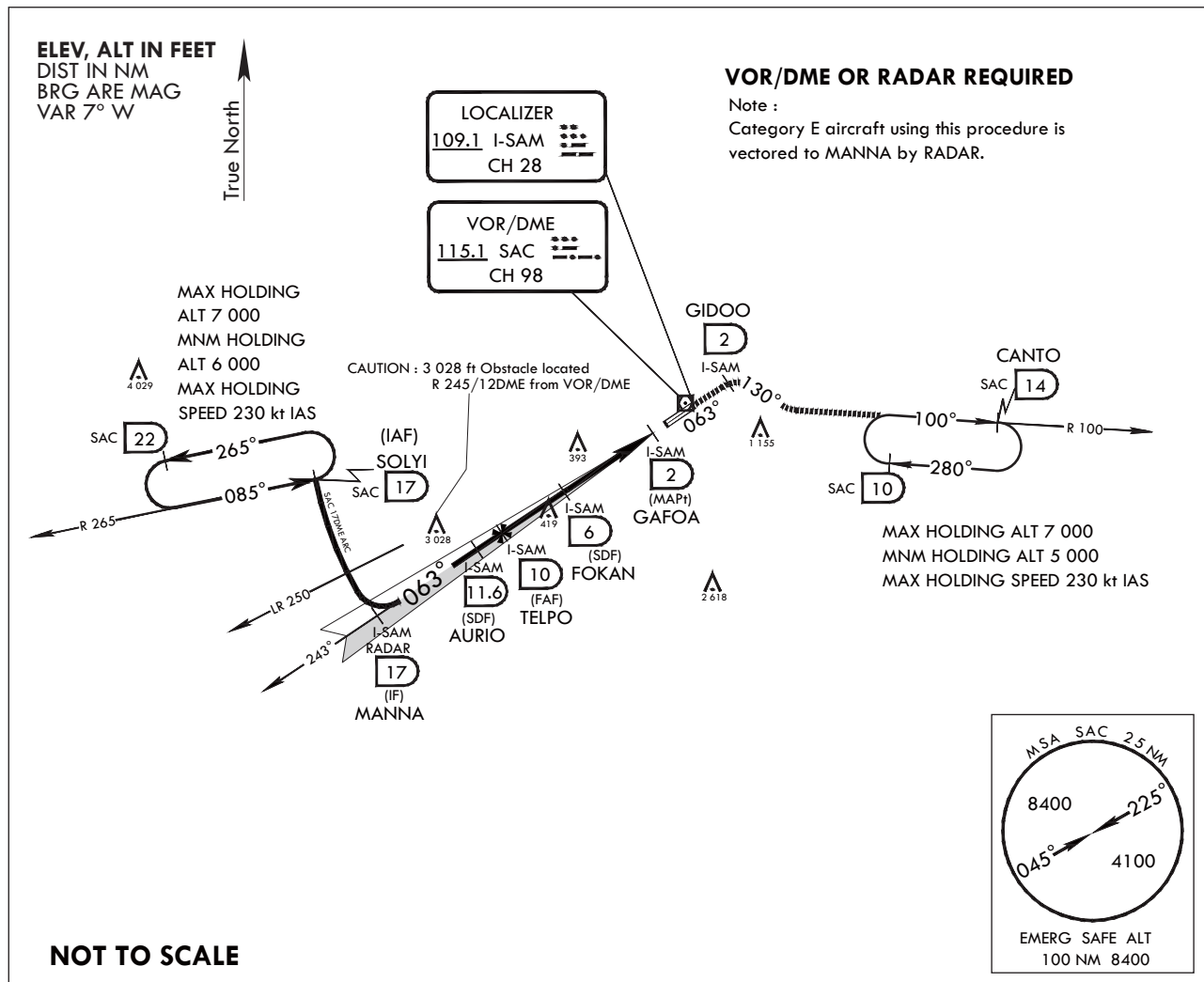


INSTRUMENT APPROACH CHART

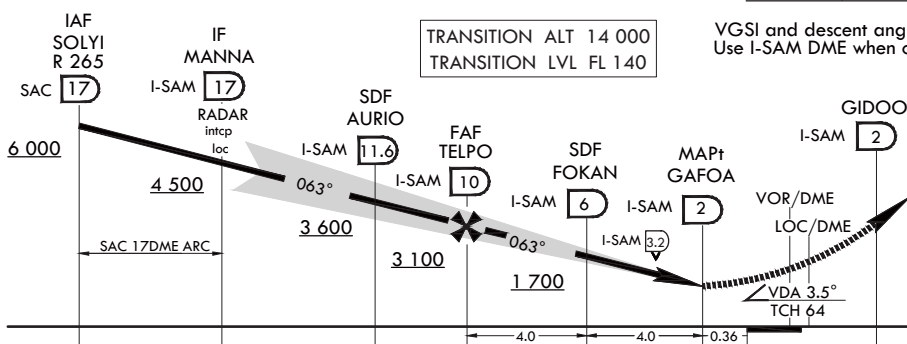
AERODROME ELEV 25 ft
HEIGHTS RELATED TO HIGHEST ELEV TDZ 17 ft

SACHEON APP 135.4 344.7
SACHEON TWR 118.675 236.6
305.4

SACHEON/Sacheon (RKPS) LOC/DME RWY 06L



MISSED APPROACH : Climb to 5 000 via heading 063° to GIDOO, then right turn heading 130° to intercept R 100 SAC and track on R 100 SAC to CANTO and hold, continue climb-in-hold to 5 000, or as directed by ATC.



VGSI and descent angles not coincident (VGSI 3.7° TCH 60). Use I-SAM DME when on the localizer course.

CATEGORY	A	B	C	D	E
S-LOC 6L *	700/40	683(700-¾)	700-1½	683(700-1½)	
CIRCLING **	800-1 775(800-1)	900-1¼ 875(900-1¼)	1 000-3	975(1 000-3)	1 120-3 1 095(1 100-3)

* When ALS inop, increase CAT AB RVR to 55 and vis to 1 mile, CAT CDE vis to 2 miles.
** Circling is not authorized SE of RWY 06/24.

Change: Information of TWR frequency.

INTENTIONALLY

LEFT

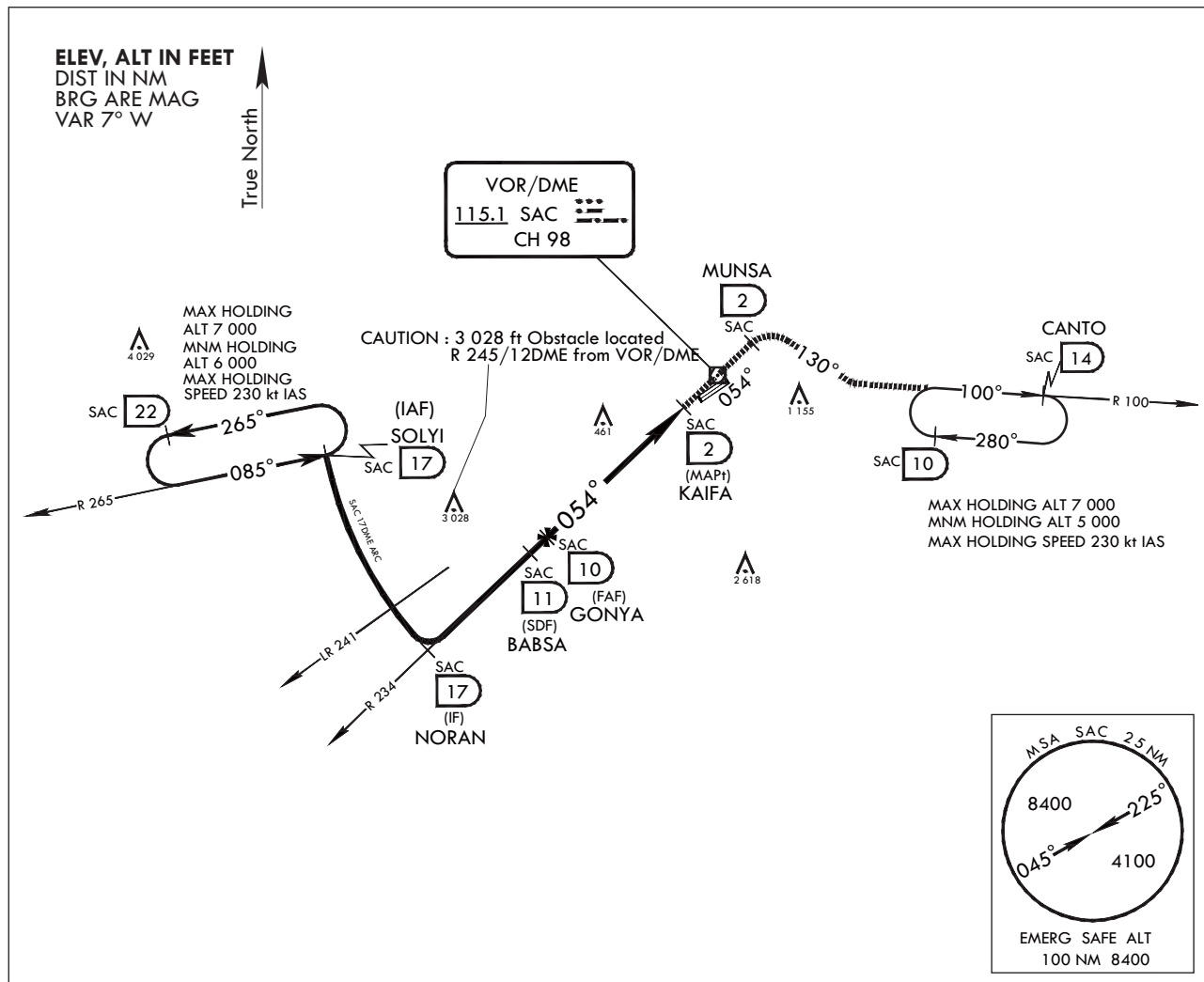
BLANK

INSTRUMENT APPROACH CHART

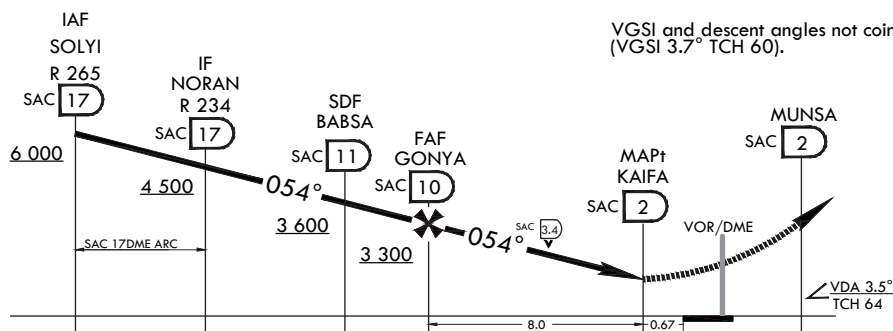
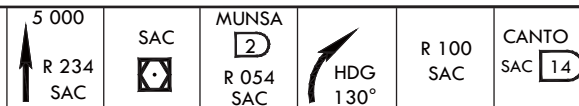
AERODROME ELEV 25 ft
HEIGHTS RELATED TO HIGHEST ELEV TDZ 17 ft

SACHEON APP 135.4 344.7
SACHEON TWR 118.675 236.6
305.4

SACHEON/Sacheon (RKPS) VOR/DME RWY 06L



MISSED APPROACH : Climb to 5 000 via track on R 234 SAC to SAC over and track on R 054 SAC to MUNSA, heading 130° to intercept R 100 SAC and track on R 100 SAC to CANTO and hold, continue climb-in-hold to 5 000.



CATEGORY	A	B	C	D
S-VOR 6L *	880/45	863(900-7/8)	880-2	863(900-2)
CIRCLING **	880-1 1/4 855(900-1 1/4)	900-1 1/4 875(900-1 1/4)	1 000-3	975(1 000-3)

* When ALS inop, increase CAT A RVR to 55 and vis to 1 mile, CAT B RVR to 60 and vis to 1 1/4 miles, CAT CD vis to 2 1/2 miles.
** Circling is not authorized SE of RWY 06/24.

Change: Information of TWR frequency.

INTENTIONALLY

LEFT

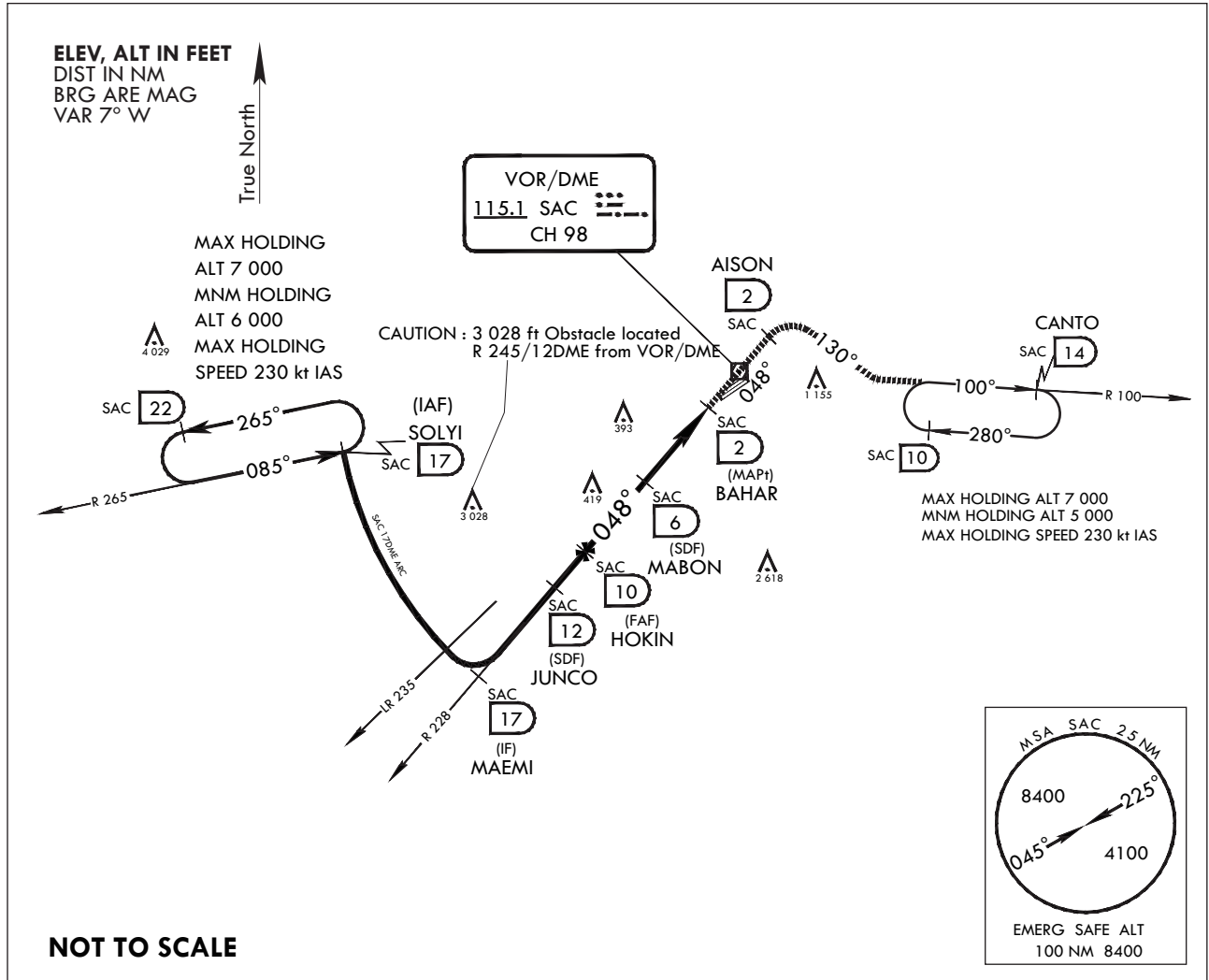
BLANK

INSTRUMENT APPROACH CHART

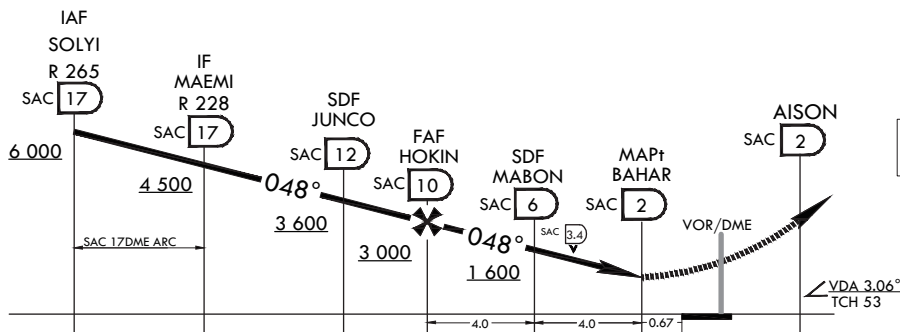
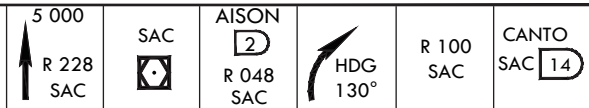
AERODROME ELEV 25 ft
HEIGHTS RELATED TO HIGHEST ELEV TDZ 19 ft

SACHEON APP 135.4 344.7
SACHEON TWR 118.675 236.6
305.4

SACHEON/Sacheon (RKPS) VOR/DME RWY 06R



MISSED APPROACH : Climb to 5 000 via track on R 228 SAC to SAC over and track on R 048 SAC to AISON, then right turn heading 130° to intercept R 100 SAC and track on R 100 SAC to CANTO and hold, continue climb-in-hold to 5 000.



TRANSITION ALT 14 000
TRANSITION LVL FL 140

CATEGORY	A	B	C	D
S-VOR 6R *	700/45	681(700-7/8)	700-1½	681(700-1½)
CIRCLING **	800-1 755(800-1)	900-1¼ 875(900-1¼)	1 000-3	975(1 000-3)

* When ALS inop, increase CAT AB RVR to 55 and vis to 1 mile, CAT CD vis to 2 miles.
** Circling is not authorized SE of RWY 06/24.

Change: Information of TWR frequency.

INTENTIONALLY

LEFT

BLANK

**INSTRUMENT
APPROACH
CHART**

AERODROME ELEV 25 ft
HEIGHTS RELATED TO
HIGHEST ELEV TDZ 24 ft

SACHEON APP 135.4 344.7
SACHEON TWR 118.675 236.6
305.4

**SACHEON/Sacheon (RKPS)
VOR/DME
RWY 24L**

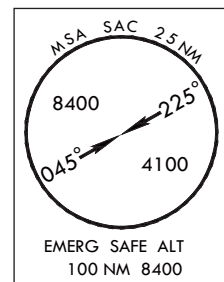
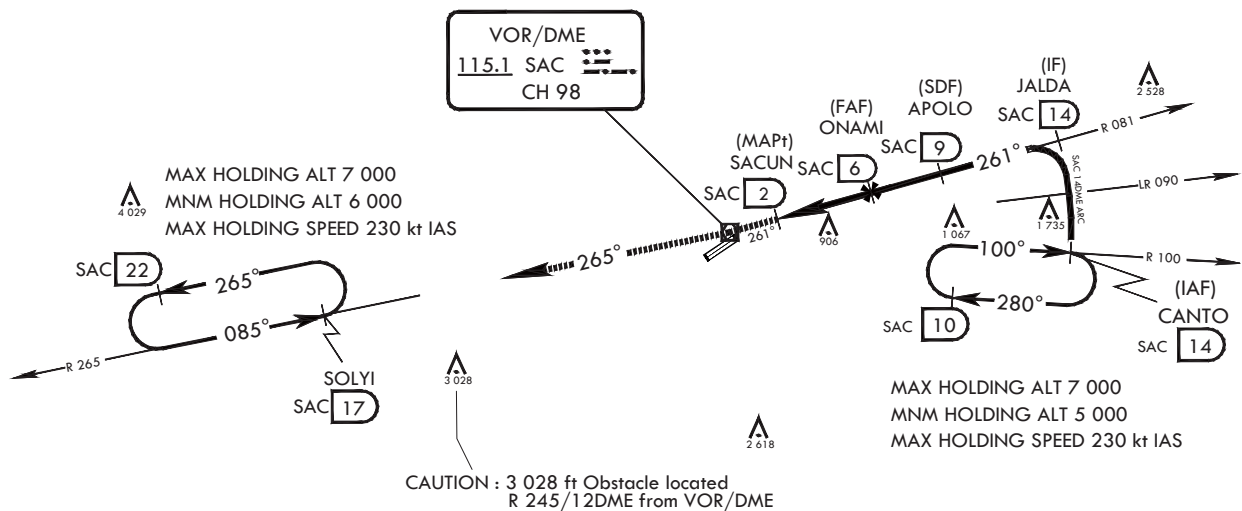
Note : Approach and circling-to-land under U.S.TERPS

ELEV, ALT IN FEET
DIST IN NM
BRG ARE MAG
VAR 7° W



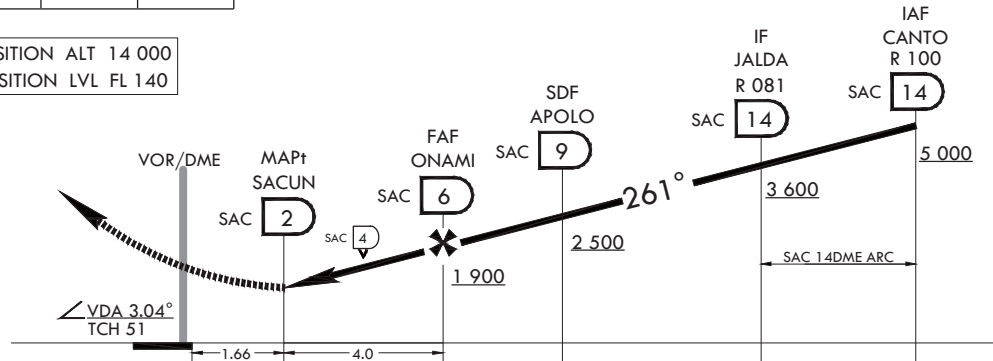
Missed approach obstacle minimum climb rate table

KNOTS	60	120	180	240	300	TO
V/V(fpm)	210	420	630	830	1 040	4 000



MISSED APPROACH : Climb to 6 000 via heading 261° to SAC then track outbound R 265 SAC to SOLYI(R 265 SAC/17DME) and hold, continue climb-in-hold to 6 000.

TRANSITION ALT 14 000
TRANSITION LVL FL 140



CATEGORY	A	B	C	D
S-VOR 24L	1 220-2	1 196(1 200-2)	1 220-3	1 196(1 200-3)
CIRCLING*	1 220-2	1 195(1 200-2)	1 220-3	1 195(1 200-3)

* Circling is not authorized SE of RWY 24/06.

Change : Information of TWR frequency.

INTENTIONALLY

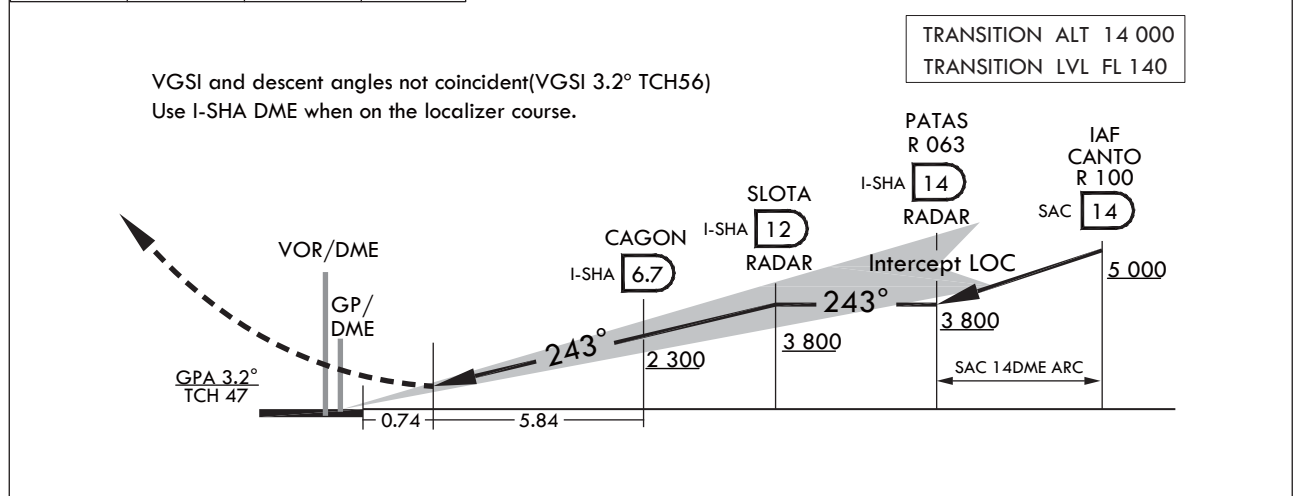
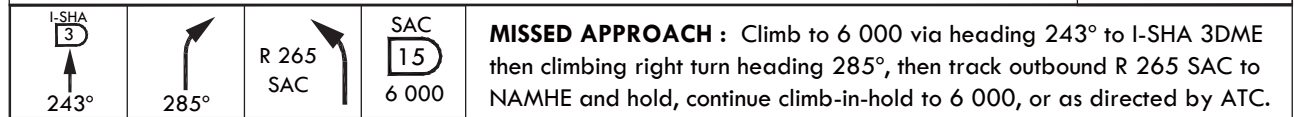
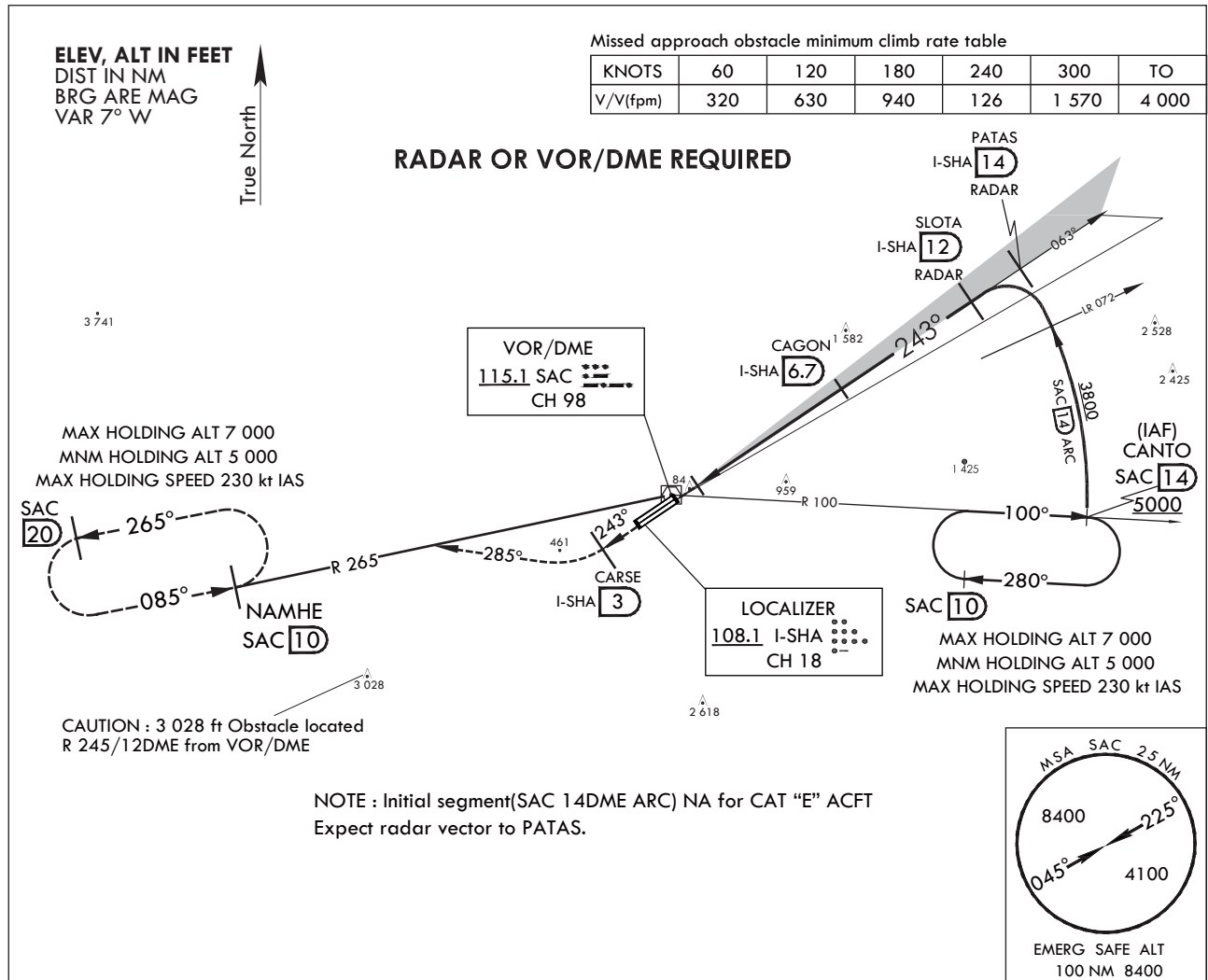
LEFT

BLANK

INSTRUMENT APPROACH CHART
AERODROME ELEV 25 ft
HEIGHTS RELATED TO HIGHEST ELEV TDZ 19 ft

SACHEON APP 135.4 344.7
SACHEON TWR 118.675 236.6
305.4

SACHEON/Sacheon (RKPS) ILS RWY 24R



CATEGORY	A	B	C	D	E
S-ILS 24R		317/45	298(300-7/8)		

Change: Information of TWR frequency.

INSTRUMENT APPROACH CHART

AERODROME ELEV 25 ft
HEIGHTS RELATED TO HIGHEST ELEV TDZ 19 ft
Note : Approach and circling-to-land under U.S.TERPS

SACHEON APP 135.4 344.7
SACHEON TWR 118.675 236.6
305.4

SACHEON/Sacheon (RKPS)
LOC/DME RWY 24R

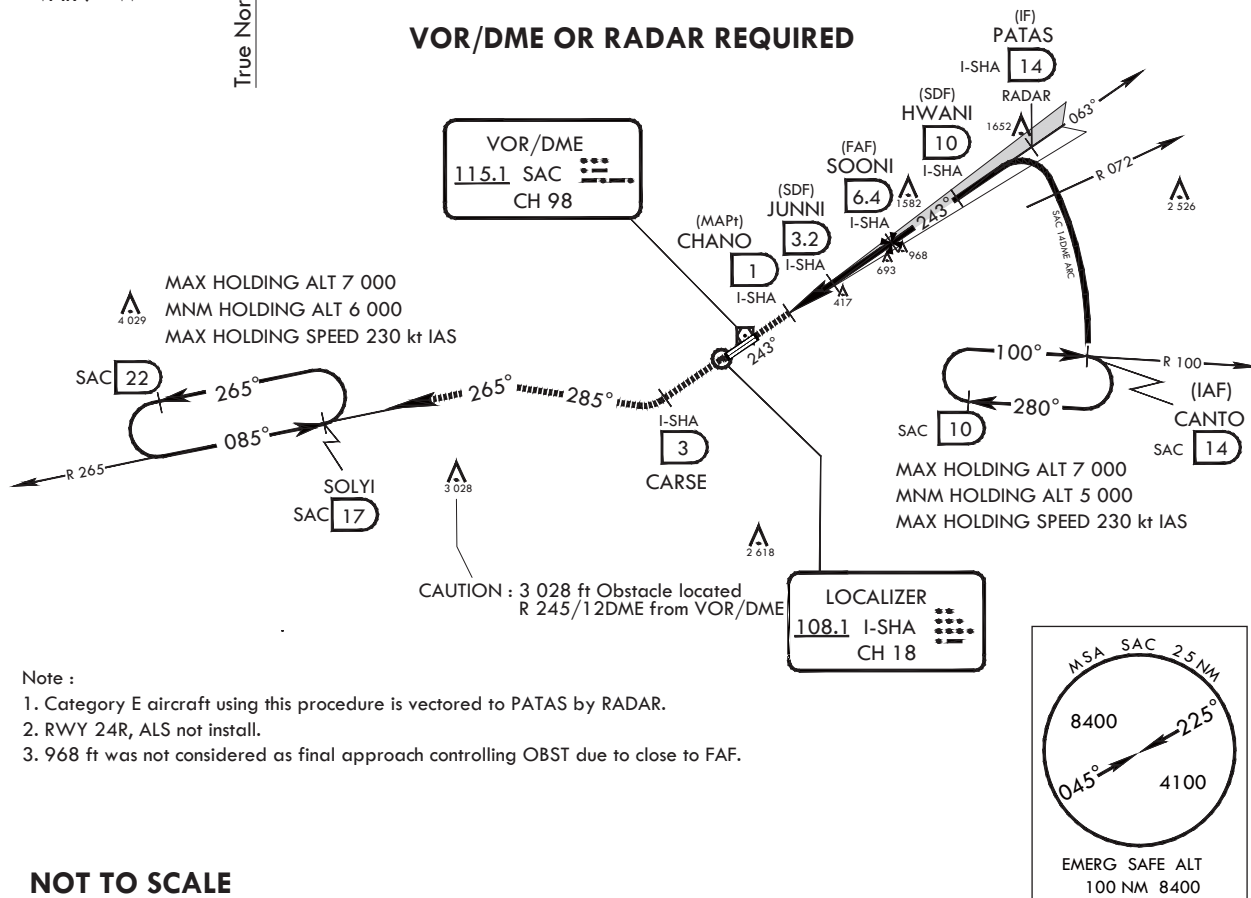
ELEV, ALT IN FEET
DIST IN NM
BRG ARE MAG
VAR 7° W



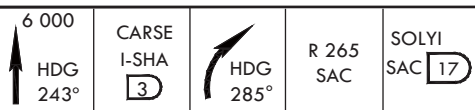
Missed approach obstacle minimum climb rate table

KNOTS	60	120	180	240	300	TO
V/V(fpm)	270	540	810	1 080	1 350	3 900

VOR/DME OR RADAR REQUIRED



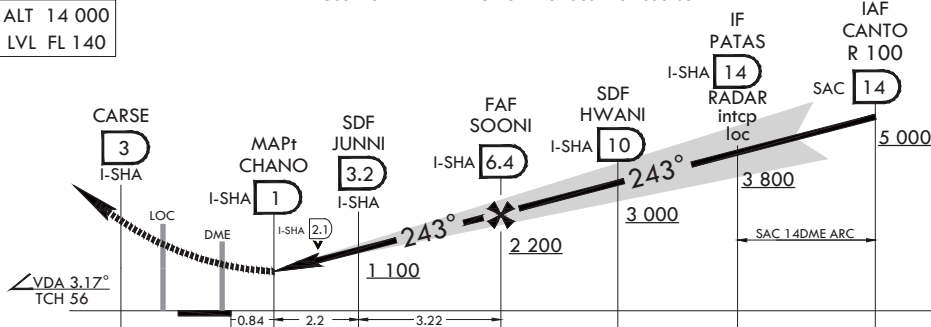
NOT TO SCALE



MISSED APPROACH : Climb to 6 000 via heading 243° to I-SHA 3DME and right turn heading 285° and track outbound R 265 SAC to SOLYI(R 265 SAC/17DME) and hold, continue climb-in-hold to 6 000, or as directed ATC.

Use I-SHA DME when on the localizer course

TRANSITION ALT 14 000
TRANSITION LVL FL 140



CATEGORY	A	B	C	D	E
S-LOC 24R	740/55	721(800-1)		740-2	721(800-2)
CIRCLING*	840-1 ¼ 815(900-1¼)	880-1 ¼ 855(900-1¼)	1 000-3 975(1 000-3)	1 020-3 995(1 000-3)	1 120-3 1 095(1 100-3)

* Circling is not authorized SE of RWY 24/06.

Change: Information of TWR frequency.

INTENTIONALLY

LEFT

BLANK

**INSTRUMENT
APPROACH
CHART**

AERODROME ELEV **25** ft
HEIGHTS RELATED TO
HIGHEST ELEV TDZ **19** ft

SACHEON APP 135.4 344.7
SACHEON TWR 118.675 236.6
305.4

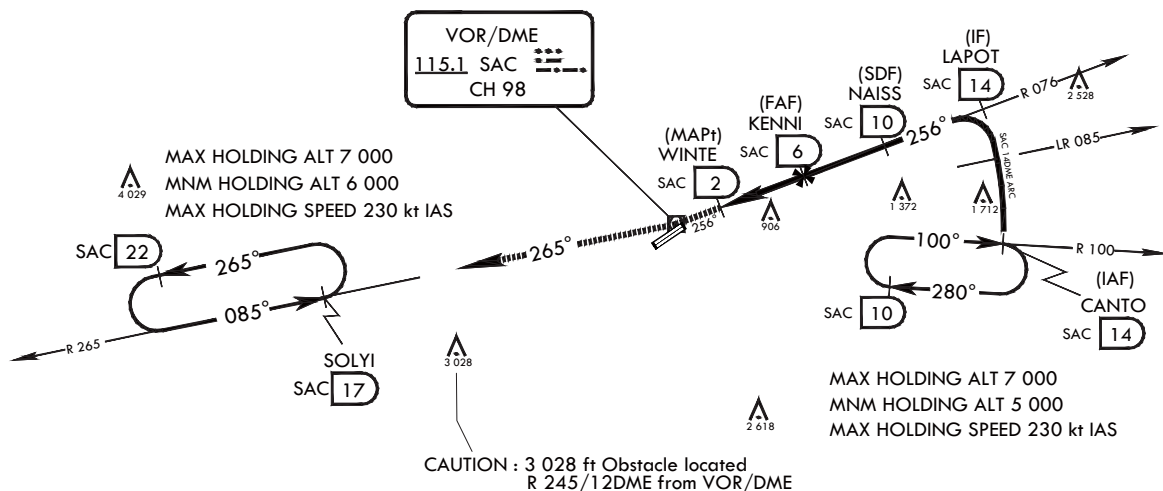
**SACHEON/Sacheon (RKPS)
VOR/DME
RWY 24R**

ELEV, ALT IN FEET
DIST IN NM
BRG ARE MAG
VAR 7° W

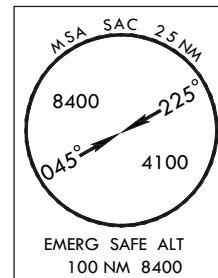


Missed approach obstacle minimum climb rate table

KNOTS	60	120	180	240	300	TO
V/V(fpm)	210	420	630	830	1 040	4 000



Note :
RWY 24R, ALS not install.

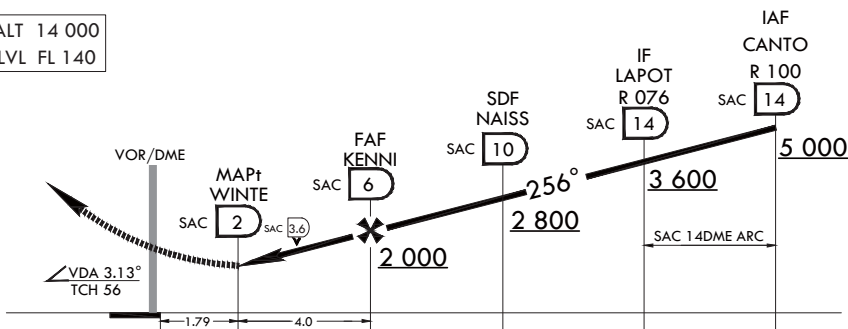


NOT TO SCALE



MISSED APPROACH : Climb to 6 000 via heading 256° to SAC then track outbound R 265 SAC to SOLYI(R 265 SAC/17DME) and hold, continue climb-in-hold to 6 000.

TRANSITION ALT 14 000
TRANSITION LVL FL 140



CATEGORY	A	B	C	D
S-VOR 24R	1 220-2 ¹ / ₈	1 201(1 200-2 ¹ / ₈)	1 220-3	1 201(1 200-3)
CIRCLING *	1 220-2 ¹ / ₈	1 195(1 200-2 ¹ / ₈)	1 220-3	1 195(1 200-3)

* Circling is not authorized SE of RWY 24/06.

Change : Information of TWR frequency.

INTENTIONALLY

LEFT

BLANK